

**From
chaos to
clarity.**

**D Trio
Installation
Instructions**



**Better Choices Today.
A Better World
Tomorrow.**

Thank you for choosing Decision Frameworks' Software!

Though you may only be installing one application, we want to let you know about the entire Decision Quality Software Suite.

DTrio and DTrio XL are our framing tools. DTrio is the newer, standalone software; DTrio XL is the Excel add-in that incorporates Decision Quality and Decision Analysis templates.

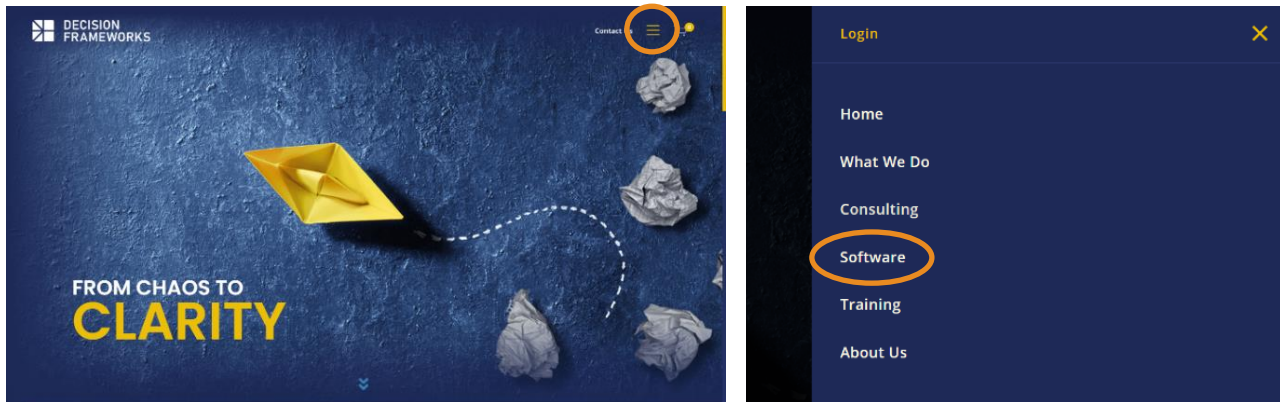
TreeTop is the analysis tool that connects directly with Excel models and other modeling platforms. TreeTop provides robust insight and probabilistic analysis of uncertainties through generated tornado diagrams and decision trees.

In addition to these tools, the Organizational Wisdom Library (OWL) is our extensive DQ tailored case library.

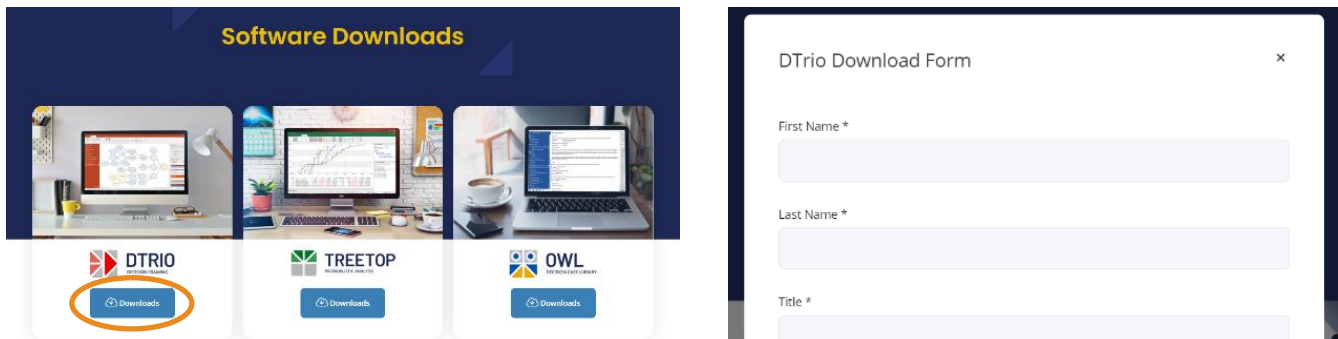
Please contact us, if you have any questions or suggestions.

Downloading Decision Frameworks Software

Open your web browser, navigate to <http://www.decisionframeworks.com>. Open the menu at the top by clicking on the hamburger icon. The software section opens. Choose *Software* in the right navigation bar.



On the software downloads page, choose the products you would like to download. Click on *Download*, enter your information into the popup form and press *Submit* at the bottom.



After the form is submitted, the final download page will appear. Click on *Download Software* to begin.

Download Software



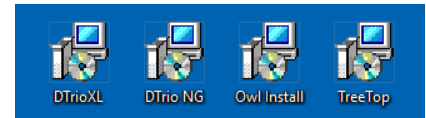
Two product streams of the framing software *DTRio* are available. *DTRio XL* is an Excel add-in with a series of Decision Analysis/Decision Quality pre-made Excel templates whereas *DTRio* is a newer stand-alone product Decision Framing application.

TreeTop is available in two editions, *Professional* and *Enterprise*. The download is the same – the license issued to you determines which product features are enabled.

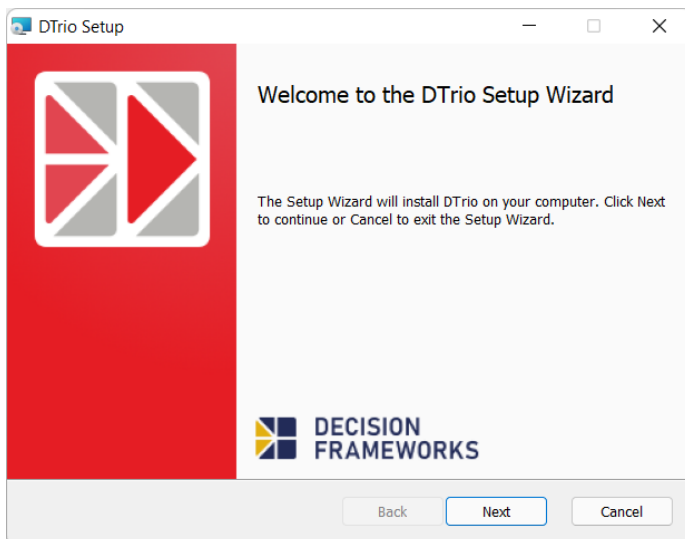
Depending on your web browser you may have to agree to download dialogs. If prompted, save the file to a location on your hard drive, such as your desktop. If not prompted, move the file from your *Downloads* folder to a location of your choice after downloading has finished.

Installing Decision Frameworks Software

All our software is distributed as *Windows Installer Packages* with an “msi” extension. Launch the installer by double-clicking on it.



All Decision Frameworks installers are *Current Users Only* installations. The actual end user that will use the product must be logged in for the installation. In some corporate environments, this may require that Windows user privileges are elevated temporarily.



After launching the setup file, the *Setup Wizard* starts.

Click *Next* to begin the installation. Agree to the End User License Agreement and choose the installation location in the next screens.

After the installation is completed, click *Finish* to close the installer.



We strongly suggest installing Decision Frameworks software in a directory that is local to your computer. Installing on a mapped network drive can cause problems, depending on how the network drive is configured.

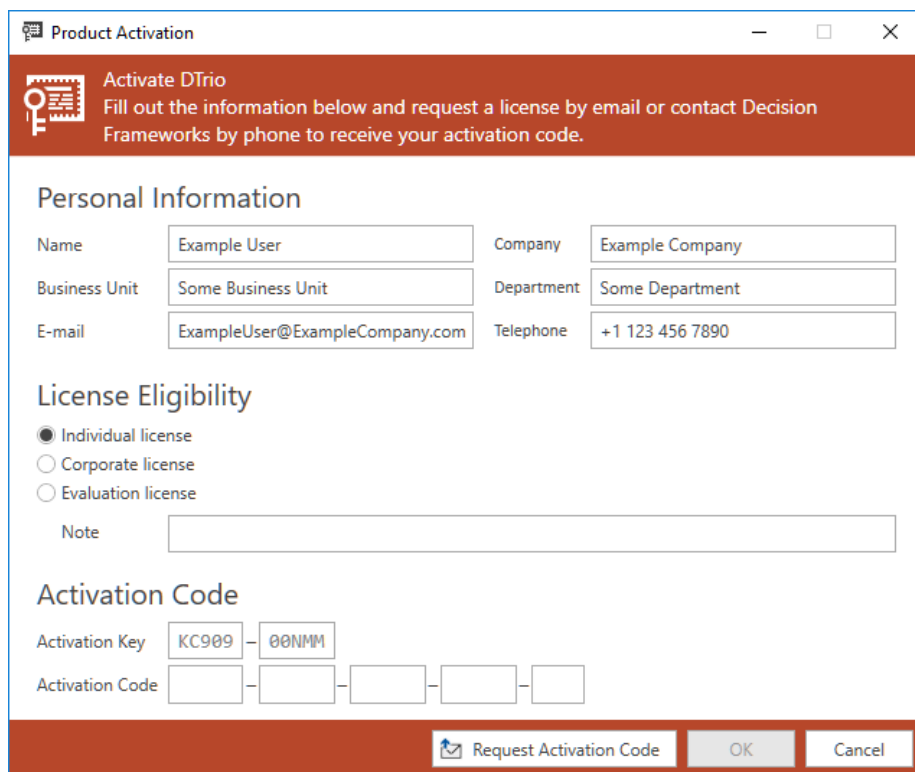
Obtaining Your License Code

DTrio is licensed upon first use.

Start DTrio from the *Program Files* menu.

If this is the first time you have used the software or if your license has expired, you will now be presented with a product activation screen. Fill in all your information in this screen including what type of license you are requesting. Once complete, the *Request Activation Code* button in the lower right hand corner will be enabled. Click on this to create an email which you can send to us.

We will respond to this email by sending you an activation code. When you receive the activation code, transpose it or copy/paste it into the registration screen. If you've entered your code correctly, the *OK* button is enabled. Please click it and you are ready to use DTrio.



The screenshot shows a 'Product Activation' dialog box with a red header. The header contains a key icon and the text: 'Activate DTrio. Fill out the information below and request a license by email or contact Decision Frameworks by phone to receive your activation code.' The main area is divided into three sections: 'Personal Information' with fields for Name (Example User), Company (Example Company), Business Unit (Some Business Unit), Department (Some Department), E-mail (ExampleUser@ExampleCompany.com), and Telephone (+1 123 456 7890); 'License Eligibility' with radio buttons for Individual license (selected), Corporate license, and Evaluation license, and a Note field; and 'Activation Code' with an 'Activation Key' (KC909 - 00NMM) and an 'Activation Code' field with five empty boxes. At the bottom, there are three buttons: 'Request Activation Code' (with an envelope icon), 'OK', and 'Cancel'.



The stand-alone version of DTrio, TreeTop and OWL can either be licensed with a single activation code or individually. The license email that you receive states for which products the code is valid. If it is valid for multiple products, you only need to activate one of them.

DTrio XL always requires a separate license.

Trouble Shooting

If the installation fails without a specific error message, repeat the installation to create a log file to help you trouble shoot the problem.

Detailed instructions can be found here: <http://www.advancedinstaller.com/user-guide/ga-log.html>

Contact information

If you have any questions or experience any problems, please contact support@decisionframeworks.com or call +1 713-647-9736 during business hours which are 9:00 a.m. – 5:00 p.m. CST.